

MIFARE Classic Tool

<https://play.google.com/store/apps/details?id=de.syss.MifareClassicTool&hl=fr&gl=US>

Procédure :

Matériel nécessaire

Smartphone **Android** compatible **NFC**



Application **MCT Android**
(téléchargeable gratuitement sur Play Store) 



Google Play
Store

Aucun autre matériel ne sera compatible

Vérification importante :

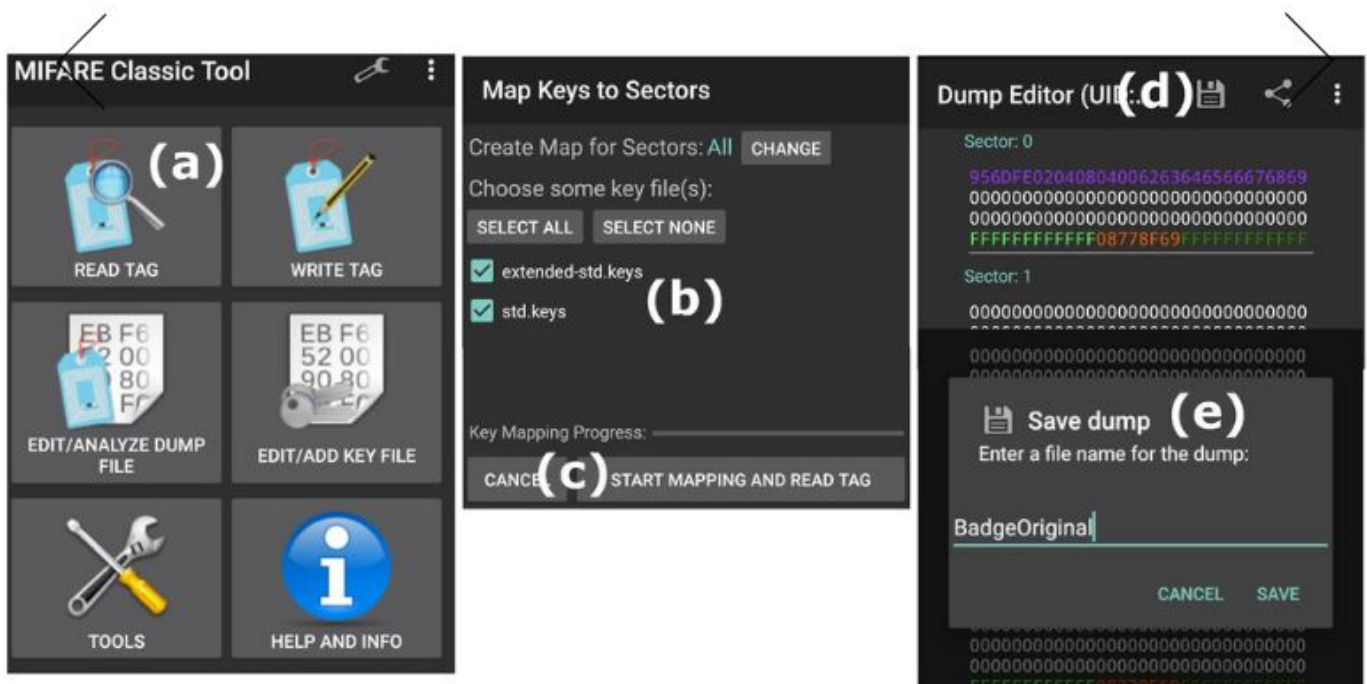
Votre smartphone NFC équipé de l'application MCT doit pouvoir lire votre badge d'origine

Mode d'emploi



1. Mettez votre badge original en contact avec votre smartphone. Lancer l'application MCT, puis "read Tag" **(a)**, sélectionner les clés par défaut **(b)** et lancer "Start Mapping and Read Tag" **(c)**

2. Sauvegardez **(d)** les données du badge original **(e)**



Mode d'emploi



3. Prenez désormais votre badge programmable, sélectionnez "Write Tag" (f) puis "Write Dump" (g) en cochant les deux options (h) (sans ces deux options votre badge ne sera plus réinscriptible)

4. Sélectionnez les données du badge original "Select Dump" (i) en choisissant tous les secteurs (j). Lancer la copie "Start Mapping and Write Dump" (k)

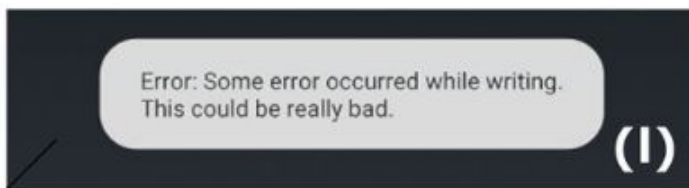
The screenshot displays the MIFARE Classic Tool application interface, which is divided into several panels:

- MIFARE Classic Tool (Main Menu):** Located on the left, it contains six icons: 'READ TAG', 'WRITE TAG' (labeled with a red circle 'f'), 'EDIT/ANALYZE DUMP FILE', 'EDIT/ADD KEY FILE', 'TOOLS', and 'HELP AND INFO' (labeled with a blue circle 'i').
- Write Tag Panel:** The central panel shows the 'Write Tag' process. It has two radio buttons: 'Write Block' (unselected) and '(g) Write Dump (Clone)' (selected). Below this, there is a text description: 'Write a dump (or some sectors of it) to a tag. Blocks containing unknown data (--) will be skipped!'. A 'SELECT DUMP' button (labeled with a red circle 'i') is visible. Underneath, there are two checked options under 'Show Options' (labeled with a red circle 'h'): 'Use these Access Conditions for all sectors:' with the value '08778F' and an information icon, and 'Advanced: Enable writing to manufacturer block' with an information icon.
- Open Tag Dump Panel:** On the right, it shows the 'Open Tag Dump' screen. It asks to 'Choose the dump to be written:' and has 'BadgeOriginal' selected (labeled with a red circle 'i'). Below, 'Sector 14' and 'Sector 15' are both checked (labeled with a red circle 'j'). 'CANCEL' and 'OK' buttons are at the bottom.
- Map Keys to Sectors Panel:** Below the 'Open Tag Dump' panel, it shows the 'Map Keys to Sectors' screen. It has a 'Create Map for Sectors: 0 - 15' field with a 'CHANGE' button. Below that, it says 'Choose some key file(s):' and has 'SELECT ALL' and 'SELECT NONE' buttons. Two key files are checked: 'extended-std.keys' and 'std.keys'.
- Key Mapping Progress Panel:** At the bottom right, it shows the 'Key Mapping Progress:' bar (labeled with a red circle 'k') and 'CANCEL' and 'START MAPPING AND WRITE DUMP' buttons.

Mode d'emploi



5. Un message d'erreur s'affichera lors de la première copie (l). Il suffira de reproduire la séquence de programmation pour obtenir la confirmation d'une programmation réussie (m).



**A vous de jouer !
Bonne utilisation !**

Revision #2

Created 2021-10-09 12:18:14 UTC by Admin

Updated 2022-03-27 19:03:54 UTC by Admin