

# SDRuno

- [Précisions de réglages SDRuno](#)
- [Plugin CW Decoder](#)
- [Plugins for SDRuno](#)
- [Plugin PSK Decoder](#)
- [Plugin RTTY Decoder](#)
- [Plugin NAVTEX Decoder](#)
- [Plugin FT8 Decoder](#)
- [Plugin Acars Decoder](#)
- [Plugin DRM Decoder](#)
- [Plugin CW Skimmer Decoder](#)
- [Plugin Weatherfax Decoder](#)
- [Plugin WSPR Decoder](#)

# Précisions de réglages

## SDRuno

Message aux débutants qui veulent faire du décodage digi en mode FM (Packet, AIS, Noaa, SSTV 144, etc).

Que ce soit en BLU au autre, ne jamais activer de filtres, vous risquez de perdre des données et ainsi rendre votre décodage de mauvaise qualité, voir inexistant.

Lors de l'installation ou la réinitialisation de SdrUno, par défaut, la fonction « DEEM » en FM est activée, c'est la désaccentuation audio.

Désactivez cette fonction pour les modes digi en FM, pour ce faire, dans la fenêtre « RX Control » clic sur le bouton « EXW » et dans la fenêtre « EX Control », désactiver « DEEM ».

Bon décodage, 73's.



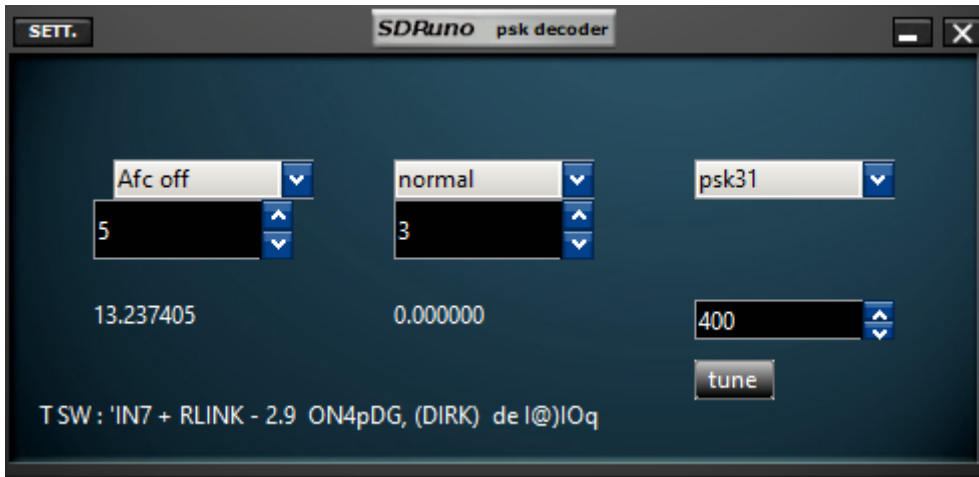


# Plugins for SDRuno

<https://www.sdr-j.tk/uno-plugins.htm>

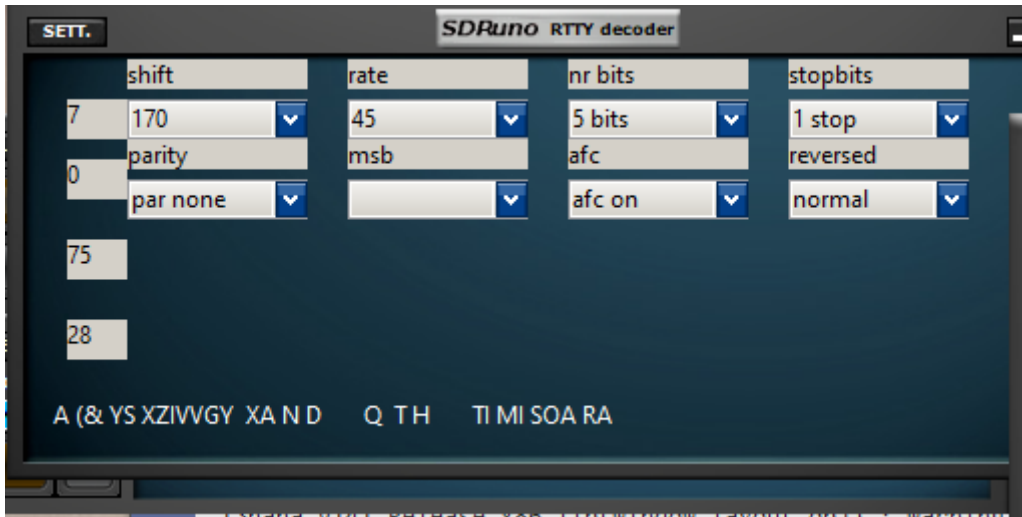
# Plugin PSK Decoder

[https://github.com/JvanKatwijk/SDRunoPlugin\\_pskDecoder](https://github.com/JvanKatwijk/SDRunoPlugin_pskDecoder)



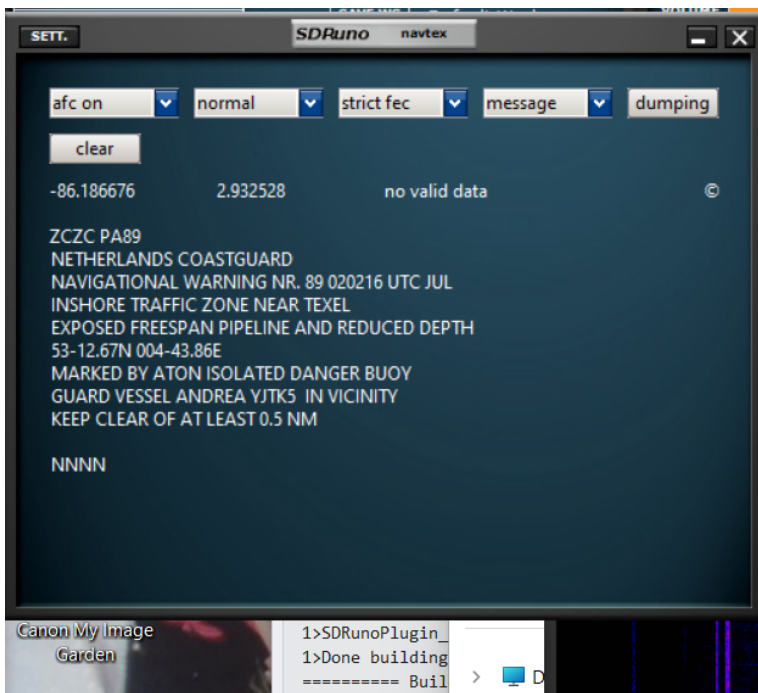
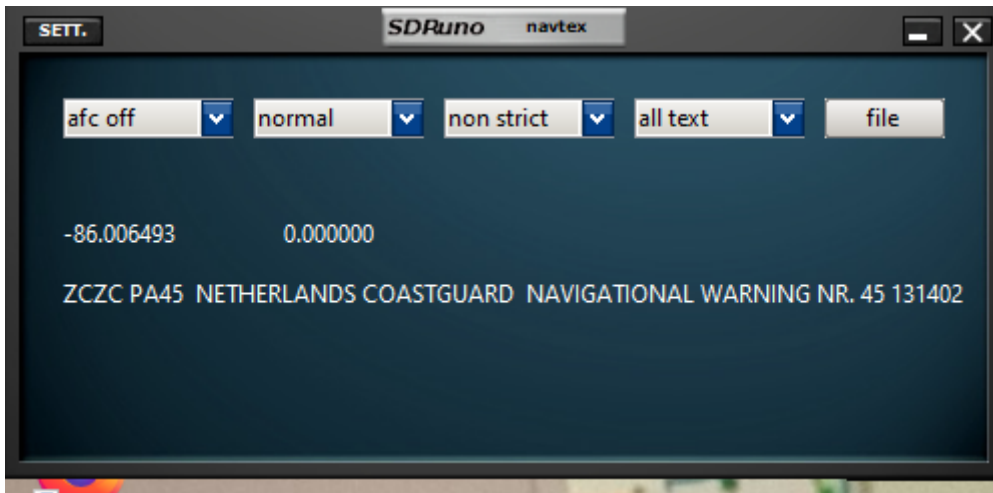
# Plugin RTTY Decoder

[https://github.com/JvanKatwijk/SDRunoPlugin\\_rtty](https://github.com/JvanKatwijk/SDRunoPlugin_rtty)



# Plugin NAVTEX Decoder

[https://github.com/JvanKatwijk/SDRunoPlugin\\_navtex](https://github.com/JvanKatwijk/SDRunoPlugin_navtex)



# Plugin FT8 Decoder

<https://www.sdrplay.com/check-out-the-new-ft8-plugin-for-sdruno/>

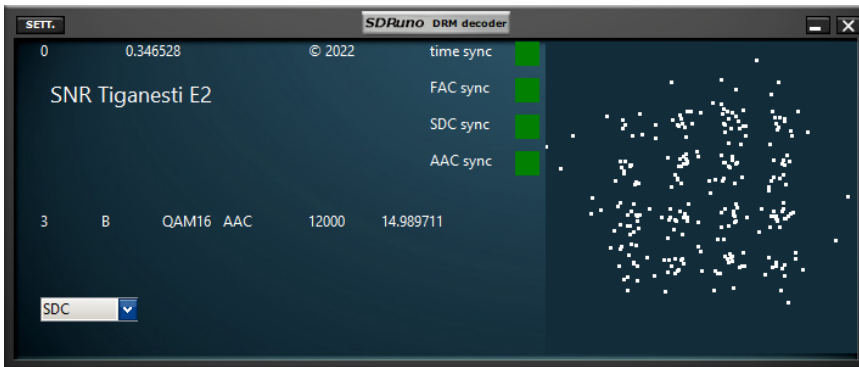
# Plugin Acars Decoder

[https://github.com/JvanKatwijk/unoPlugins-jan/tree/master/SDRunoPlugin\\_acars](https://github.com/JvanKatwijk/unoPlugins-jan/tree/master/SDRunoPlugin_acars)



# Plugin DRM Decoder

[https://github.com/JvanKatwijk/unoPlugins-jan/tree/master/SDRunoPlugin\\_drm](https://github.com/JvanKatwijk/unoPlugins-jan/tree/master/SDRunoPlugin_drm)

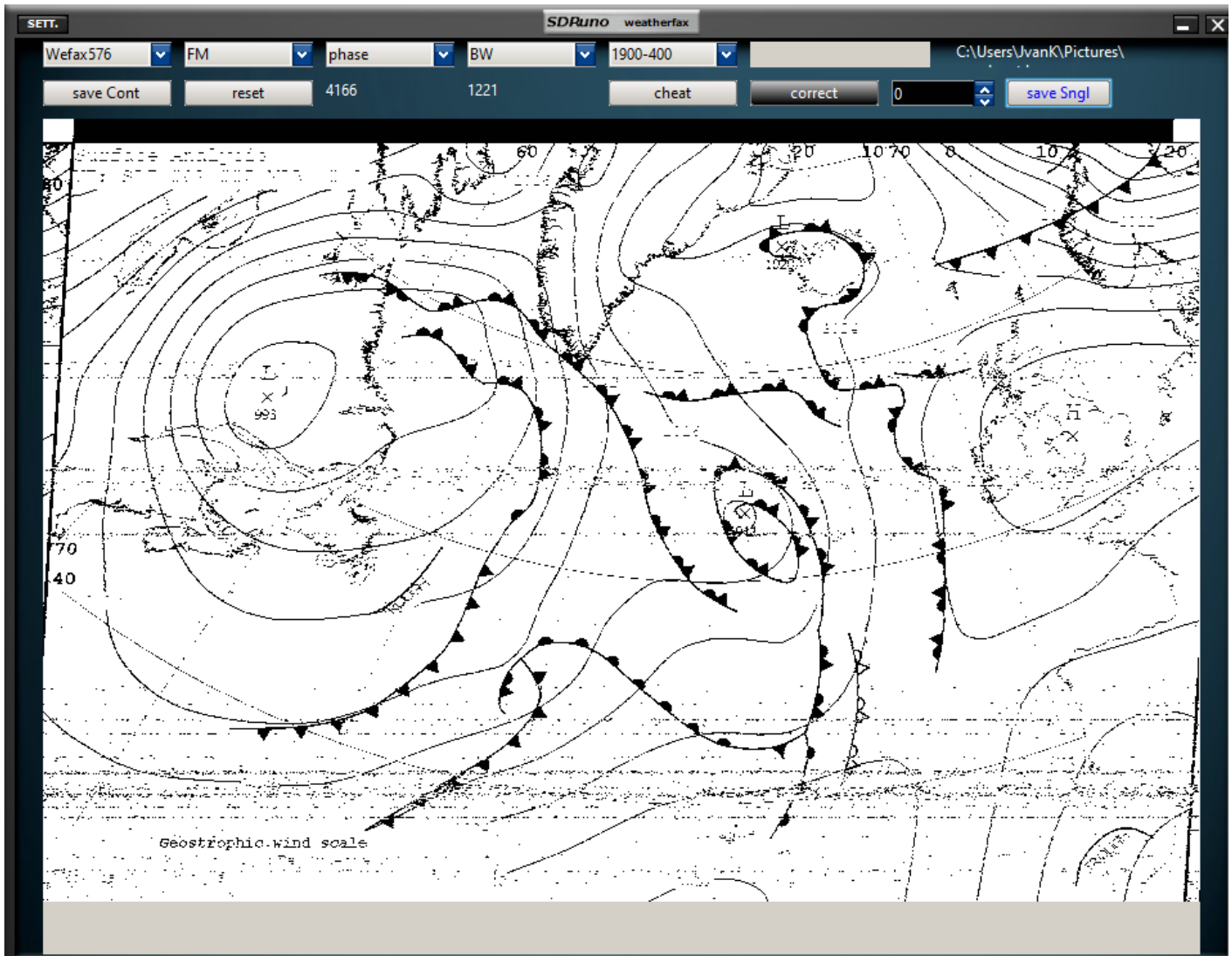


# Plugin CW Skimmer Decoder

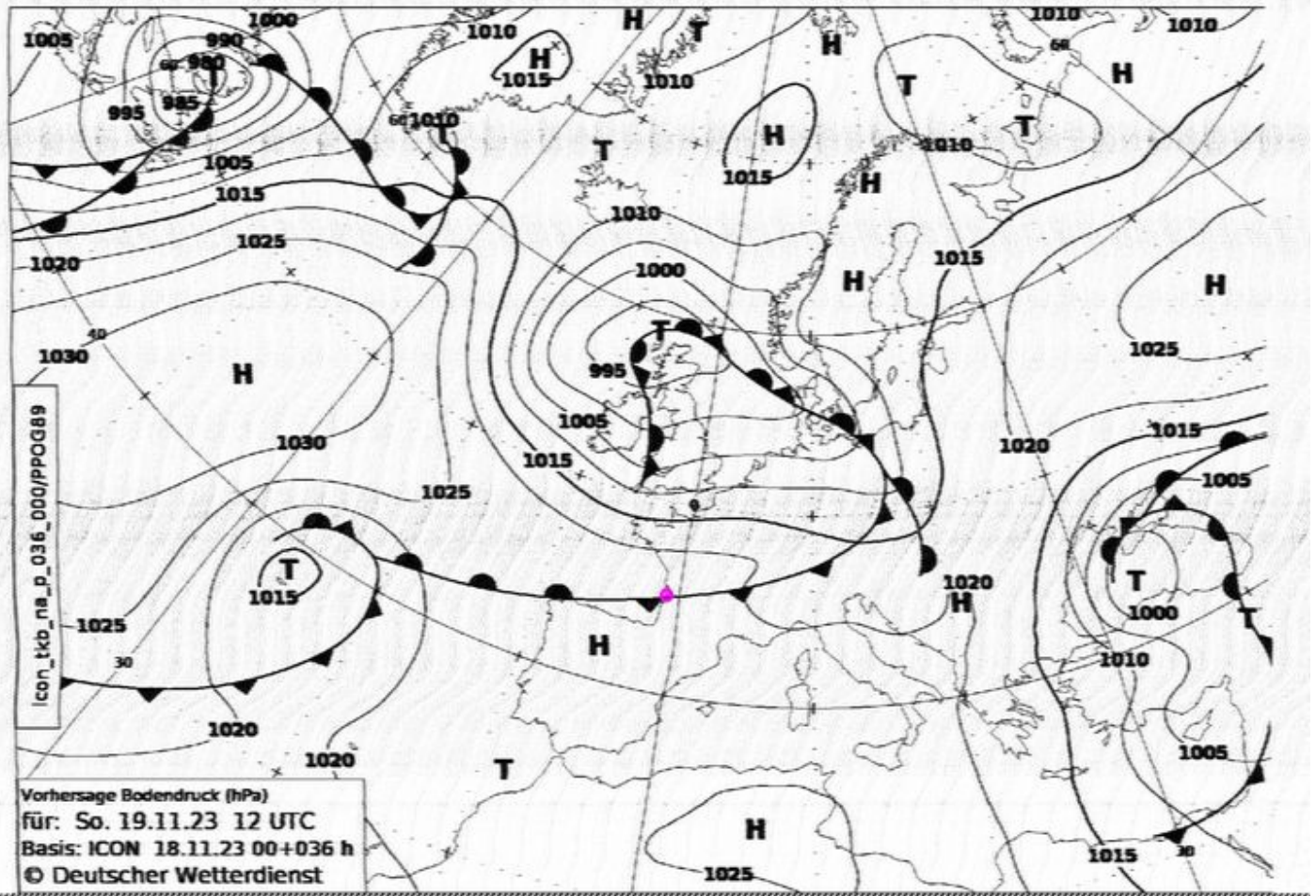
[https://github.com/JvanKatwijk/unoPlugins-jan/tree/master/SDRunoPlugin\\_skimmer](https://github.com/JvanKatwijk/unoPlugins-jan/tree/master/SDRunoPlugin_skimmer)

# Plugin Weatherfax Decoder

[https://github.com/JvanKatwijk/unoPlugins-jan/tree/master/SDRunoPlugin\\_weatherfax](https://github.com/JvanKatwijk/unoPlugins-jan/tree/master/SDRunoPlugin_weatherfax)

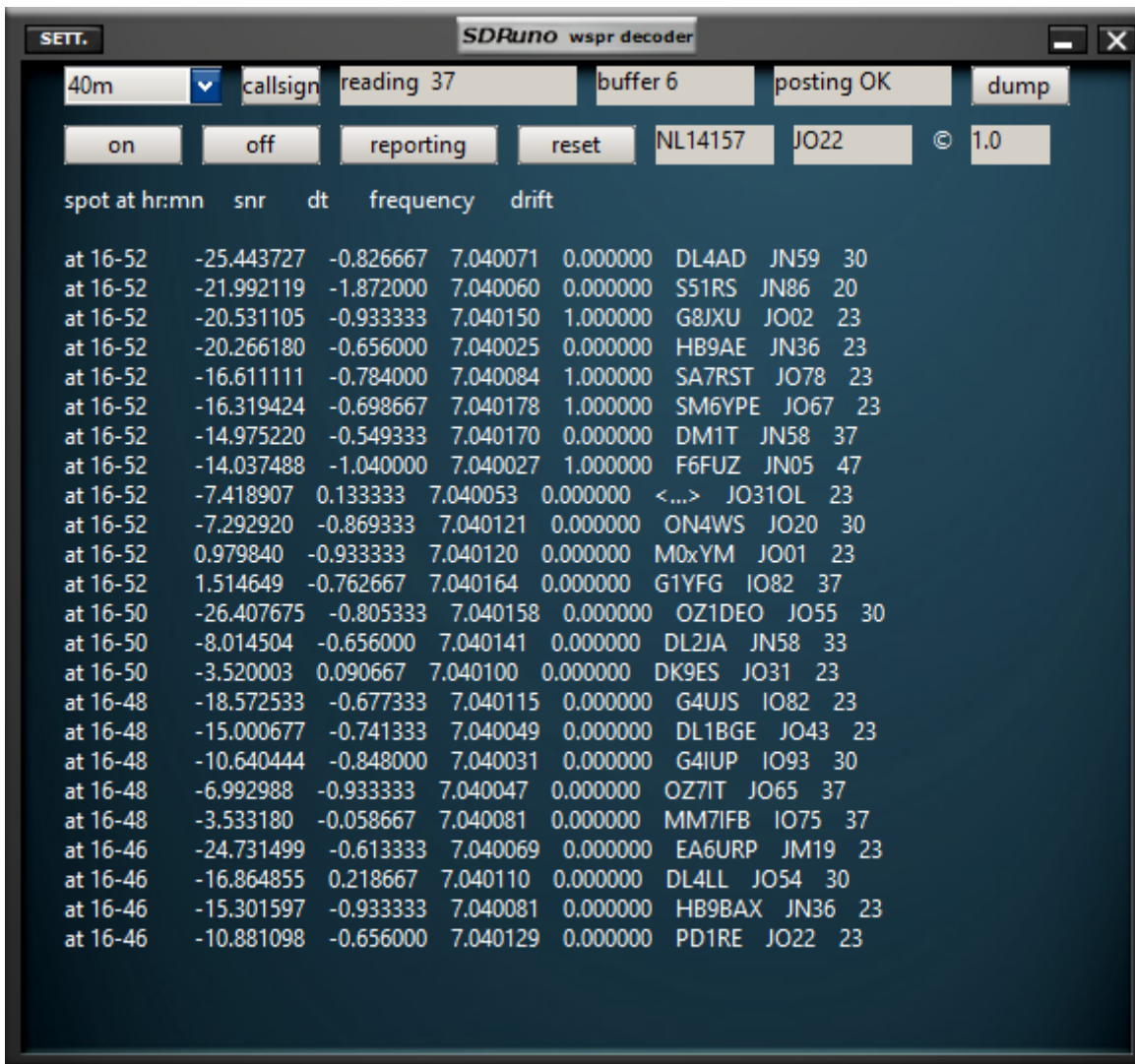


**Wefax :** 13.880600 Mhz



# Plugin WSPR Decoder

[https://github.com/JvanKatwijk/unoPlugins-jan/tree/master/SDRunoPlugin\\_wspr](https://github.com/JvanKatwijk/unoPlugins-jan/tree/master/SDRunoPlugin_wspr)



The screenshot shows the SDRUno WSPR decoder interface. At the top, there is a title bar with "SDRuno wspr decoder" and window control buttons. Below the title bar, there are several control elements: a "SETT." button, a dropdown menu set to "40m", a "callsign" field, a "reading 37" field, a "buffer 6" field, a "posting OK" button, and a "dump" button. Below these are two rows of buttons: "on", "off", "reporting", "reset", "NL14157", "JO22", and "© 1.0". The main area displays a list of decoded spots with the following columns: "spot at hr:mn", "snr", "dt", "frequency", "drift", and a multi-column field for call sign and grid square. The data is as follows:

spot at hr:mn	snr	dt	frequency	drift	call sign	grid square	count
at 16-52	-25.443727	-0.826667	7.040071	0.000000	DL4AD	JN59	30
at 16-52	-21.992119	-1.872000	7.040060	0.000000	S51RS	JN86	20
at 16-52	-20.531105	-0.933333	7.040150	1.000000	G8JXU	JO02	23
at 16-52	-20.266180	-0.656000	7.040025	0.000000	HB9AE	JN36	23
at 16-52	-16.611111	-0.784000	7.040084	1.000000	SA7RST	JO78	23
at 16-52	-16.319424	-0.698667	7.040178	1.000000	SM6YPE	JO67	23
at 16-52	-14.975220	-0.549333	7.040170	0.000000	DM1T	JN58	37
at 16-52	-14.037488	-1.040000	7.040027	1.000000	F6FUZ	JN05	47
at 16-52	-7.418907	0.133333	7.040053	0.000000	<...>	JO31OL	23
at 16-52	-7.292920	-0.869333	7.040121	0.000000	ON4WS	JO20	30
at 16-52	0.979840	-0.933333	7.040120	0.000000	M0xYM	JO01	23
at 16-52	1.514649	-0.762667	7.040164	0.000000	G1YFG	IO82	37
at 16-50	-26.407675	-0.805333	7.040158	0.000000	OZ1DEO	JO55	30
at 16-50	-8.014504	-0.656000	7.040141	0.000000	DL2JA	JN58	33
at 16-50	-3.520003	0.090667	7.040100	0.000000	DK9ES	JO31	23
at 16-48	-18.572533	-0.677333	7.040115	0.000000	G4UJS	IO82	23
at 16-48	-15.000677	-0.741333	7.040049	0.000000	DL1BGE	JO43	23
at 16-48	-10.640444	-0.848000	7.040031	0.000000	G4IUP	IO93	30
at 16-48	-6.992988	-0.933333	7.040047	0.000000	OZ7IT	JO65	37
at 16-48	-3.533180	-0.058667	7.040081	0.000000	MM7IFB	IO75	37
at 16-46	-24.731499	-0.613333	7.040069	0.000000	EA6URP	JM19	23
at 16-46	-16.864855	0.218667	7.040110	0.000000	DL4LL	JO54	30
at 16-46	-15.301597	-0.933333	7.040081	0.000000	HB9BAX	JN36	23
at 16-46	-10.881098	-0.656000	7.040129	0.000000	PD1RE	JO22	23